

MAIN+MAIN
INCORPORATED

Mission Valley Land

2015 Hotel Circle South

san diego, california



for lease



Located
in the
heart of
Mission
Valley.



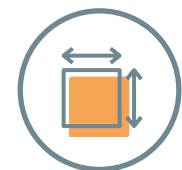
+ mission valley land



Potential restaurant space



High visibility from Interstate 8
between I-5 and Fwy 163



57,598 square foot lot



8,000 hotel rooms located
in Mission Valley

+ mission valley land

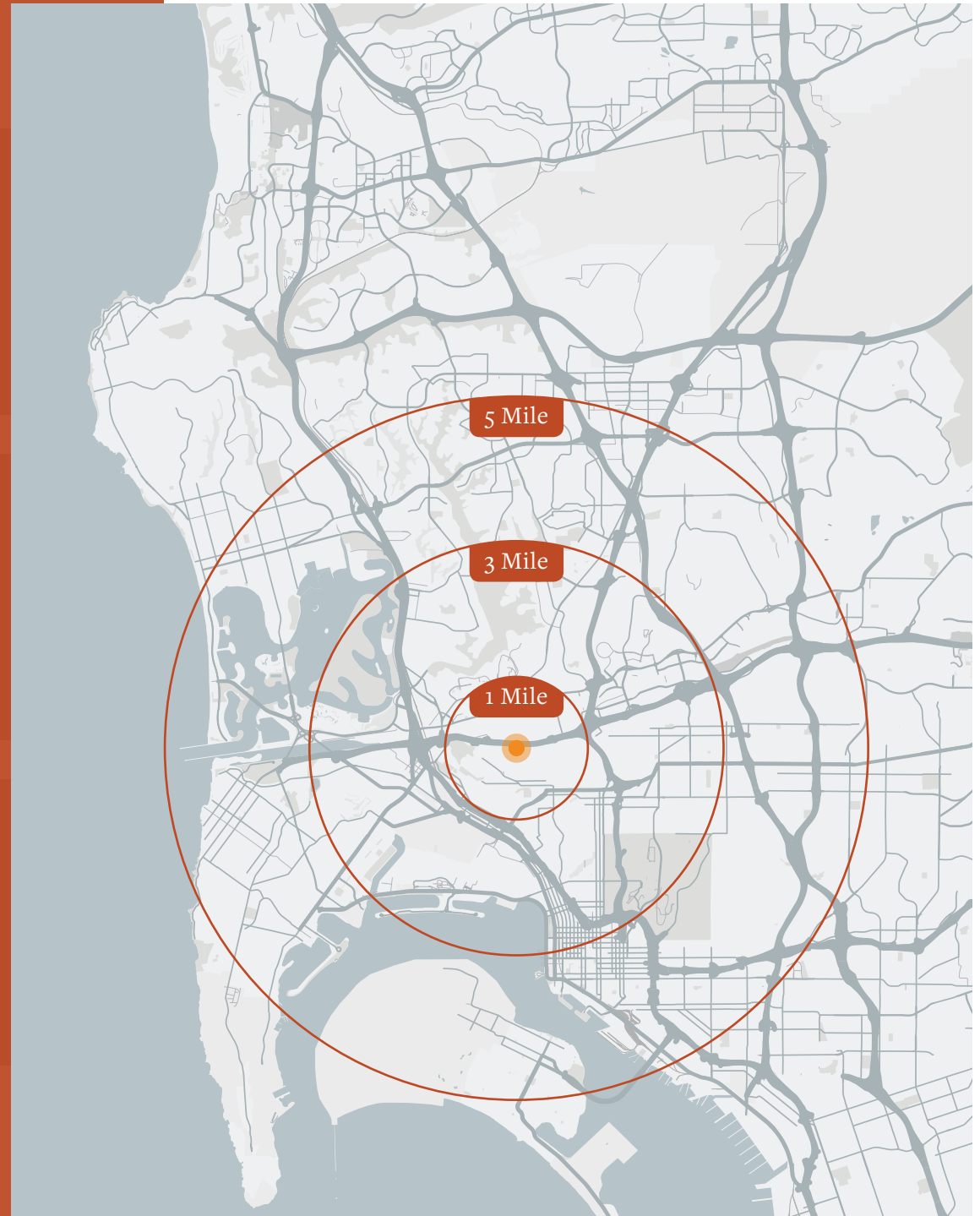
population



average household income



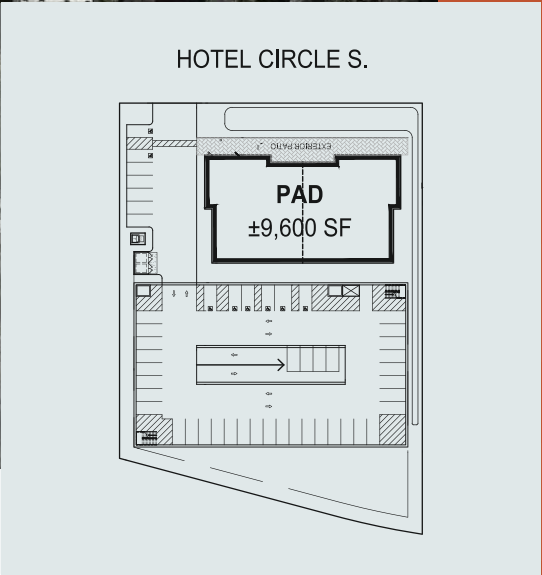
daytime population



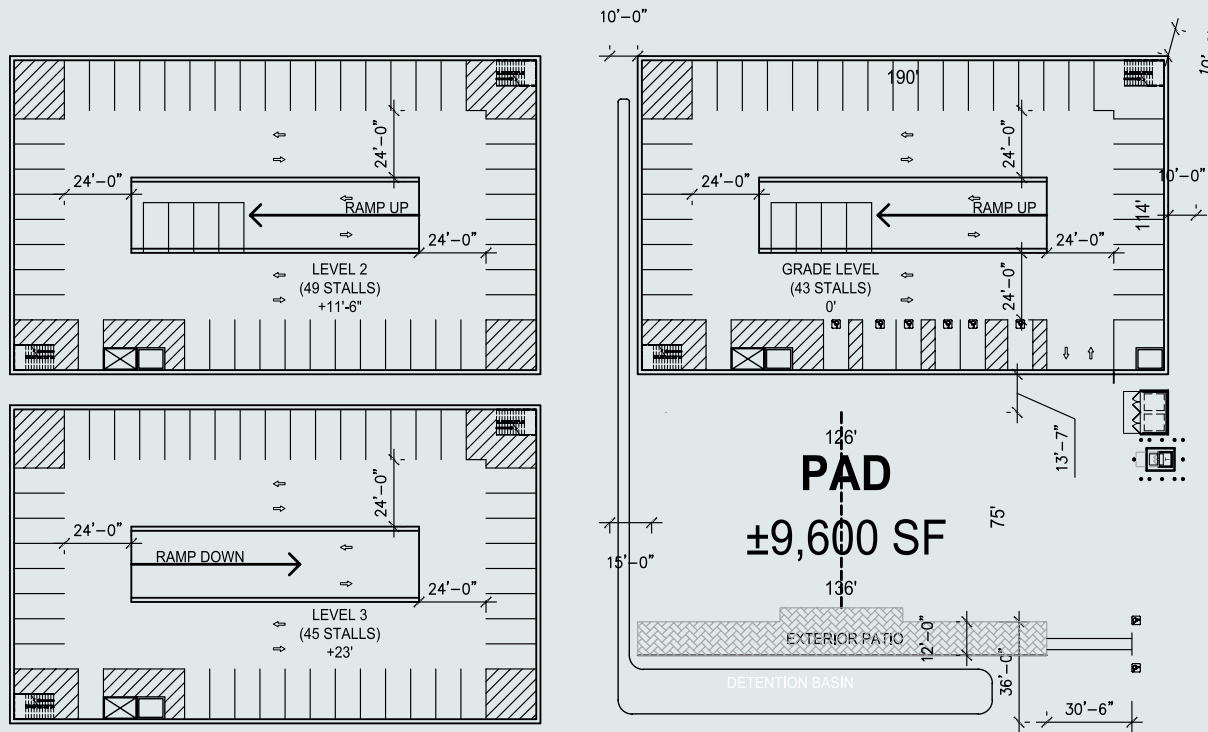
+ mission valley land



+ mission valley land



Restaurant Concept



+ mission valley land

Potential
restaurant
space on
±57,598
SF lot.

View the **restaurant**
concept site plan

[VIEW PLAN](#)

View the **fitness**
concept site plan

[VIEW PLAN](#)

MAIN+MAIN
INCORPORATED



+ mission valley land



±225,000
cars per day
on I-8



**Across the freeway from
Riverwalk Golf Club,
Westfield Mission Valley,
and Fashion Valley Mall.**

demograph

3 mile radius



Estimated Population

169,427

Estimated Households

79,526

Total Housing Units

82,794

education

High School Graduate

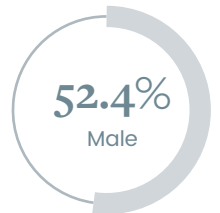
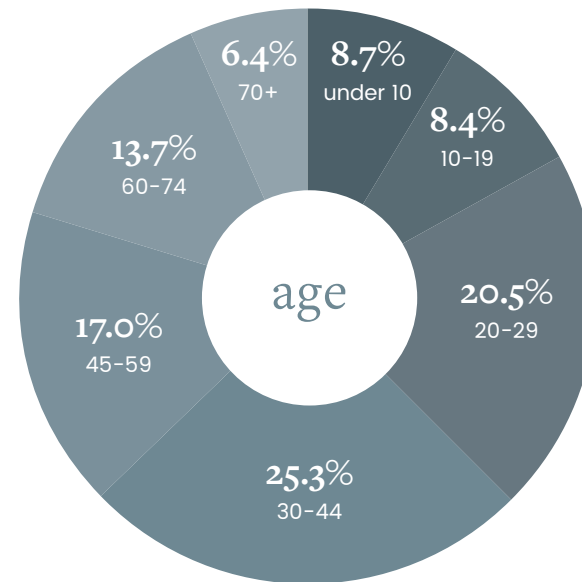
13.5%

Bachelor Degree

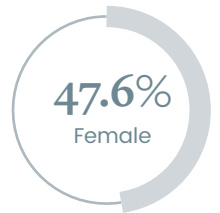
31.3%

Graduate Degree

19.4%



gender



47.6%
Female

income

17.2%
\$150k+

17.3%
\$50k-\$75k

16.9%
\$100k-\$150k

13.9%
\$75k-\$100k

for lease

for more information:

Mike Clark

858-455-7202

mclark@mainandmaininc.com

Lic No. #01192474

Tyson Youngs

858-433-2801

tyoungs@mainandmaininc.com

Lic No. #02074951

MAIN+MAIN

INCORPORATED

8910 University Center Lane, Suite 1100
San Diego, CA 92122

